

Features of the Revised, Proposed Plan

1. New planting bed at the top of existing wall
2. Existing concrete patio
3. New flagstones with grass or planting between
4. New lawn area
5. Pea stone 'beach' for wading and small boat pull-up
6. 12' canoe for scale
7. Seasonal floating or stilt dock
8. Existing steps to lake re-used in the new design
9. Large limestone boulders packed with 4-8" cobbles
10. Existing low concrete wall to be removed
11. Existing broken concrete wall to remain
12. Clean cobbles banked up against new boulders
13. Large limestone boulders in front of wall
14. Thick limestone flagstones on top of existing concrete wall
15. Sporadic small planting beds
16. Existing well location with new limestone boulder protection. Earth and planted area backfill to existing concrete wall
17. Granular steps with red cedar or flagstone risers
18. Existing large tree
19. Stepping stones in grass
20. Bench location
21. Herb and cut flower location
22. Interlock paving or flagstones
23. Landing and steps at back door
24. Stepping stones on free draining granular base and infill
25. Positive drainage from below sunroom through pea stone towards lake



Photo A
Looking north to neighbour's deck. Note watermark on wooden skirting



Photo B
Looking north to collapsed walls and steps in front of sunporch. Large concrete retaining wall (11' below) in the foreground.



Photo D
Flooded conditions June 2008 from boat, looking north. Note well cap.

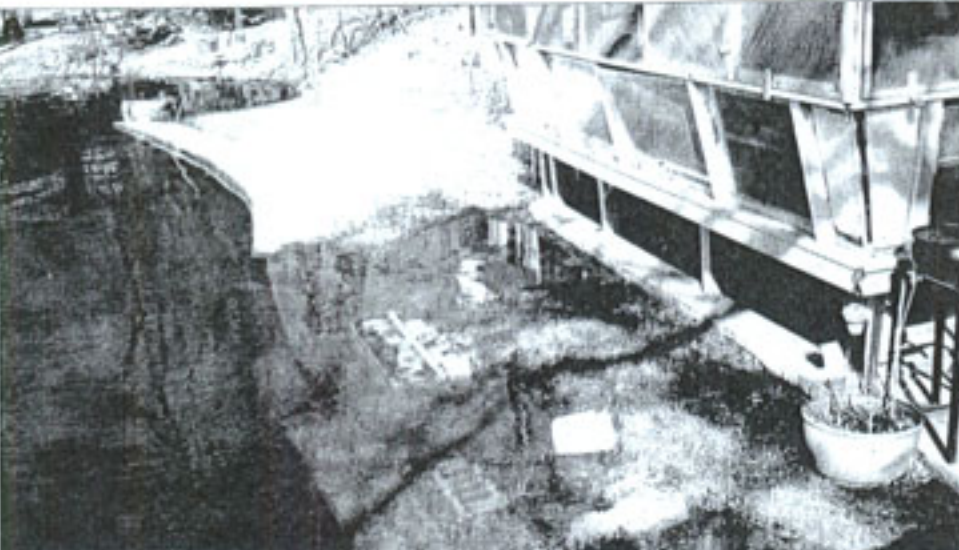


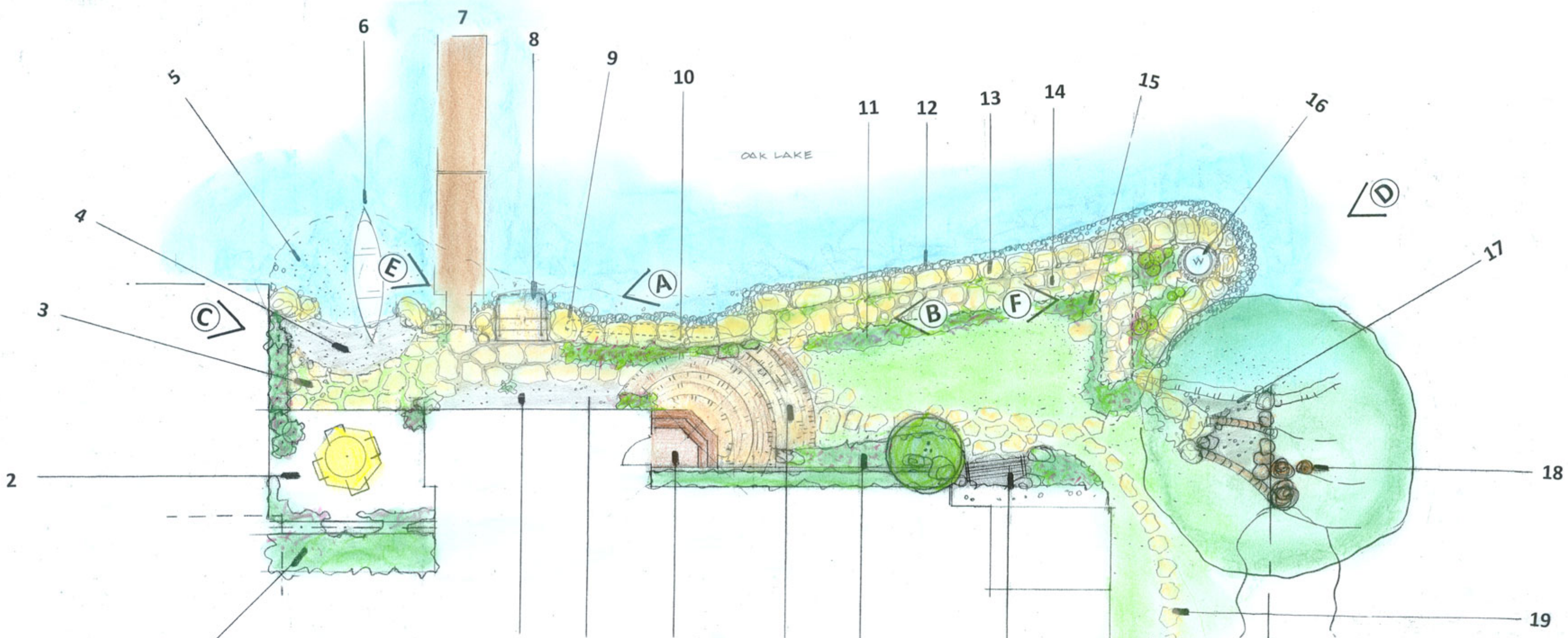
Photo C
Flooded conditions June 2008 from neighbour's wooden deck



Photo E
Flooding and winter ice damage



Photo F
'Shore well' now exposed and subject to ice damage



Green Residence at Oak Lake
11 Fidoak Lane

SCALE: 1" = 5'	APPROVED BY:	DRAWN BY:
DATE: March 4, 2010	LOWER TRENT CONSERVATION AUTHORITY PERMIT No. P200-15	KT
WATERFRONT RESTORATION PERMIT AMMENDMENT		REVISED BY:
REVISED CONCEPTUAL PLAN AND EXISTING CONDITIONS PHOTOS		KT
DRAWING No.		L1-REV

Heartland Environmental Design
Prepared by K. Tribble, B.L.A., O.A.L.A.
RR 4, Stirling, Ontario
613-849-5543
info@heartlanddesign.ca