

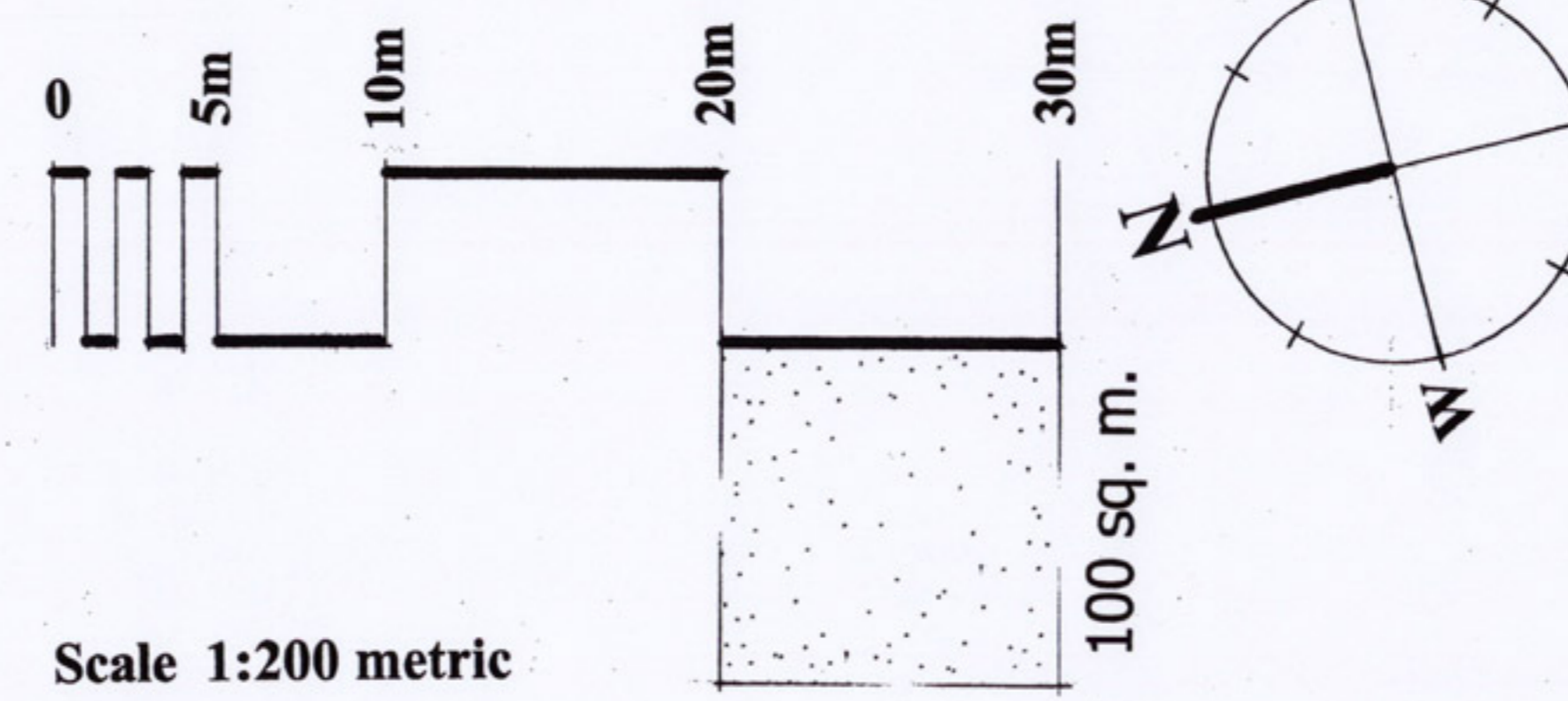
# McMullen Park and Area

## MASTER PLAN and CONCEPTUAL DEVELOPMENT

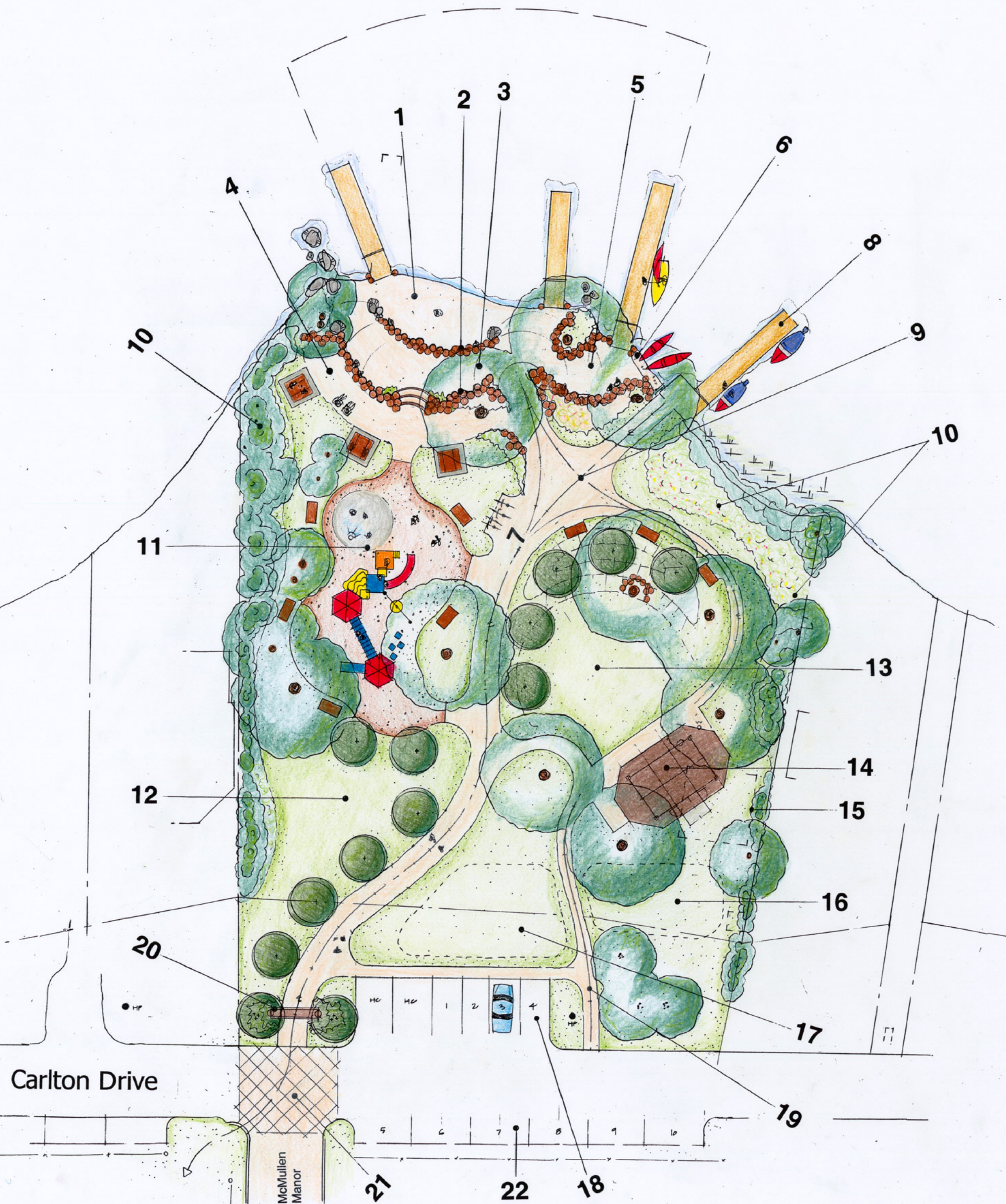
PORTLAND DISTRICT RECREATION COMMITTEE  
Township of South Frontenac

Facilitation, Design, and Plan Preparation by  
Heartland Environmental Design, Landscape Architects.  
RR4 Stirling, Ontario, K0K 3E0 613-849-5543  
[info@heartlandesign.ca](mailto:info@heartlandesign.ca)

August, 2006



Rock Lake



### Features of the Plan

1. Improved beach & swimming
2. Boulder or log sitting wall
3. Sand beach play terrace
4. Viewing and picnic terrace
5. Mid level terrace
6. Non power boat area (gravel beach)
7. Bicycle racks
8. Possible power boat docking
9. Path intersection/overlook
10. Naturalized buffer zones
11. Proposed tot lot location.
12. Picnic/open area
13. Viewing area for events at the kiosk
14. Multi-purpose kiosk. Covered stage & craft area. Possible small shared washroom
15. Existing cottage to be removed
16. Existing septic bed used if feasible
17. Potential additional septic bed
18. Parking area
19. Proposed pathways
20. Park entrance feature
21. Pedestrian crosswalk to municipal pathways, additional Parking, and future field-house



Heartland Environmental Design  
Environmental Planning & Design  
Landscape Architecture  
Urban Design

Phone: 613-395-6027  
E-mail: [info@heartlandesign.ca](mailto:info@heartlandesign.ca)  
R.R.#4, MARSH HILL ROAD  
STIRLING, ONTARIO K0K 3E0

Member of  
Ontario Association of Landscape Architects