

The City of Kingston CITY PARK PLAYGROUND

Phase 2, The Splash Pad

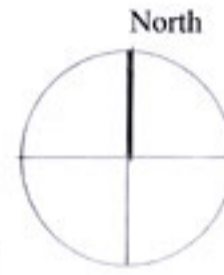
Conceptual Plan

Prepared by Heartland Environmental Design and the Greer Galloway Group Inc.
For the City of Kingston

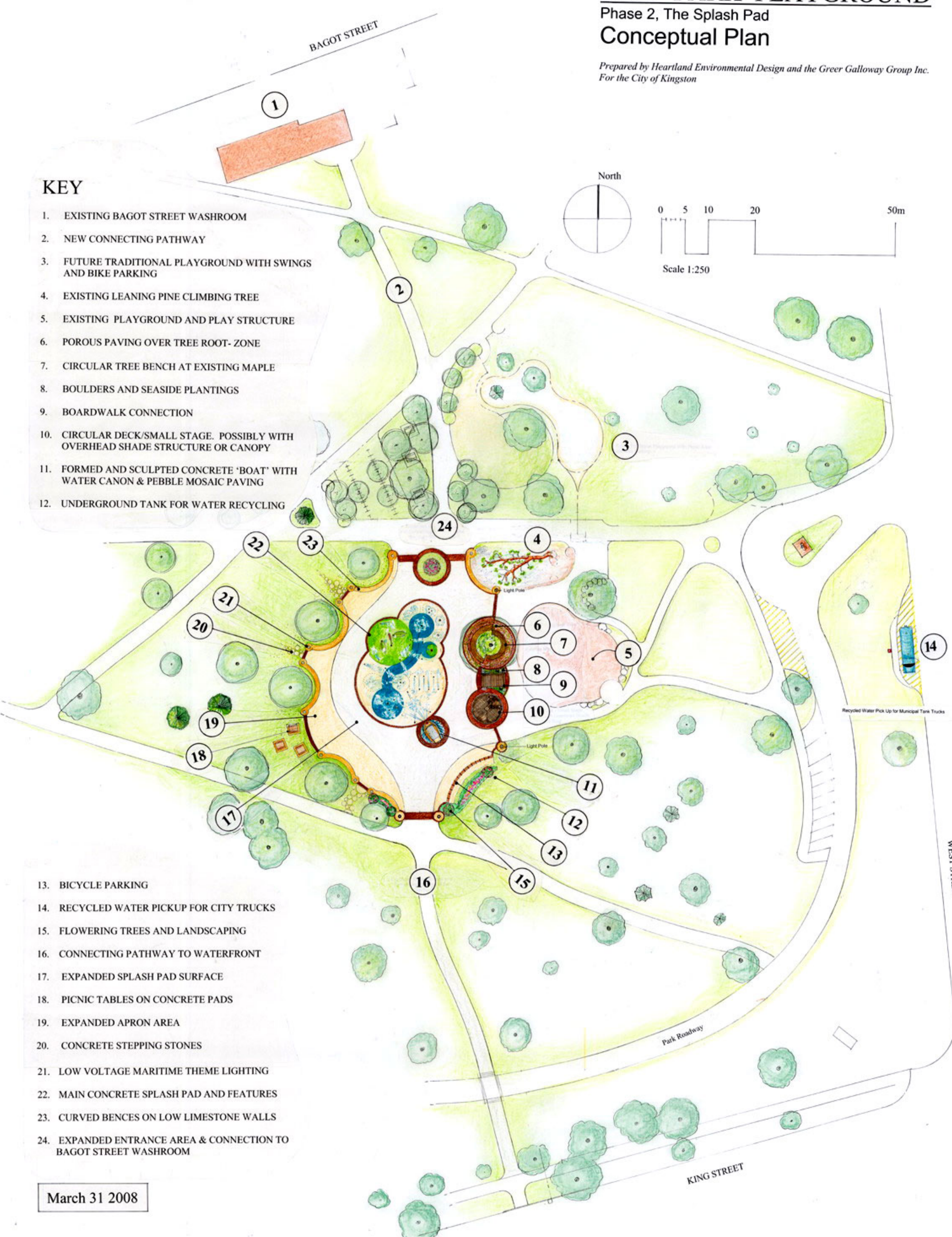
KEY

1. EXISTING BAGOT STREET WASHROOM
2. NEW CONNECTING PATHWAY
3. FUTURE TRADITIONAL PLAYGROUND WITH SWINGS AND BIKE PARKING
4. EXISTING LEANING PINE CLIMBING TREE
5. EXISTING PLAYGROUND AND PLAY STRUCTURE
6. POROUS PAVING OVER TREE ROOT-ZONE
7. CIRCULAR TREE BENCH AT EXISTING MAPLE
8. BOULDERS AND SEASIDE PLANTINGS
9. BOARDWALK CONNECTION
10. CIRCULAR DECK/SMALL STAGE. POSSIBLY WITH OVERHEAD SHADE STRUCTURE OR CANOPY
11. FORMED AND SCULPTED CONCRETE 'BOAT' WITH WATER CANON & PEBBLE MOSAIC PAVING
12. UNDERGROUND TANK FOR WATER RECYCLING

13. BICYCLE PARKING
14. RECYCLED WATER PICKUP FOR CITY TRUCKS
15. FLOWERING TREES AND LANDSCAPING
16. CONNECTING PATHWAY TO WATERFRONT
17. EXPANDED SPLASH PAD SURFACE
18. PICNIC TABLES ON CONCRETE PADS
19. EXPANDED APRON AREA
20. CONCRETE STEPPING STONES
21. LOW VOLTAGE MARITIME THEME LIGHTING
22. MAIN CONCRETE SPLASH PAD AND FEATURES
23. CURVED BENCHES ON LOW LIMESTONE WALLS
24. EXPANDED ENTRANCE AREA & CONNECTION TO BAGOT STREET WASHROOM



Scale 1:250



March 31 2008

The City of Kingston
CITY PARK PLAYGROUND

Phase 2, The Splash Pad

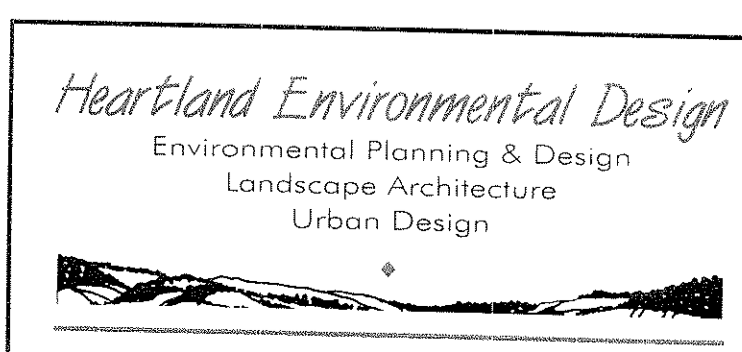
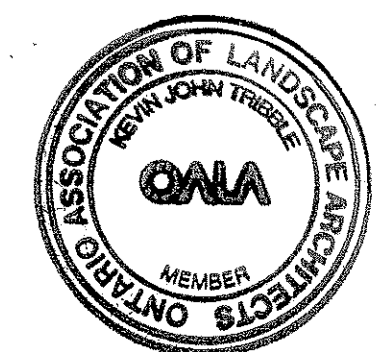
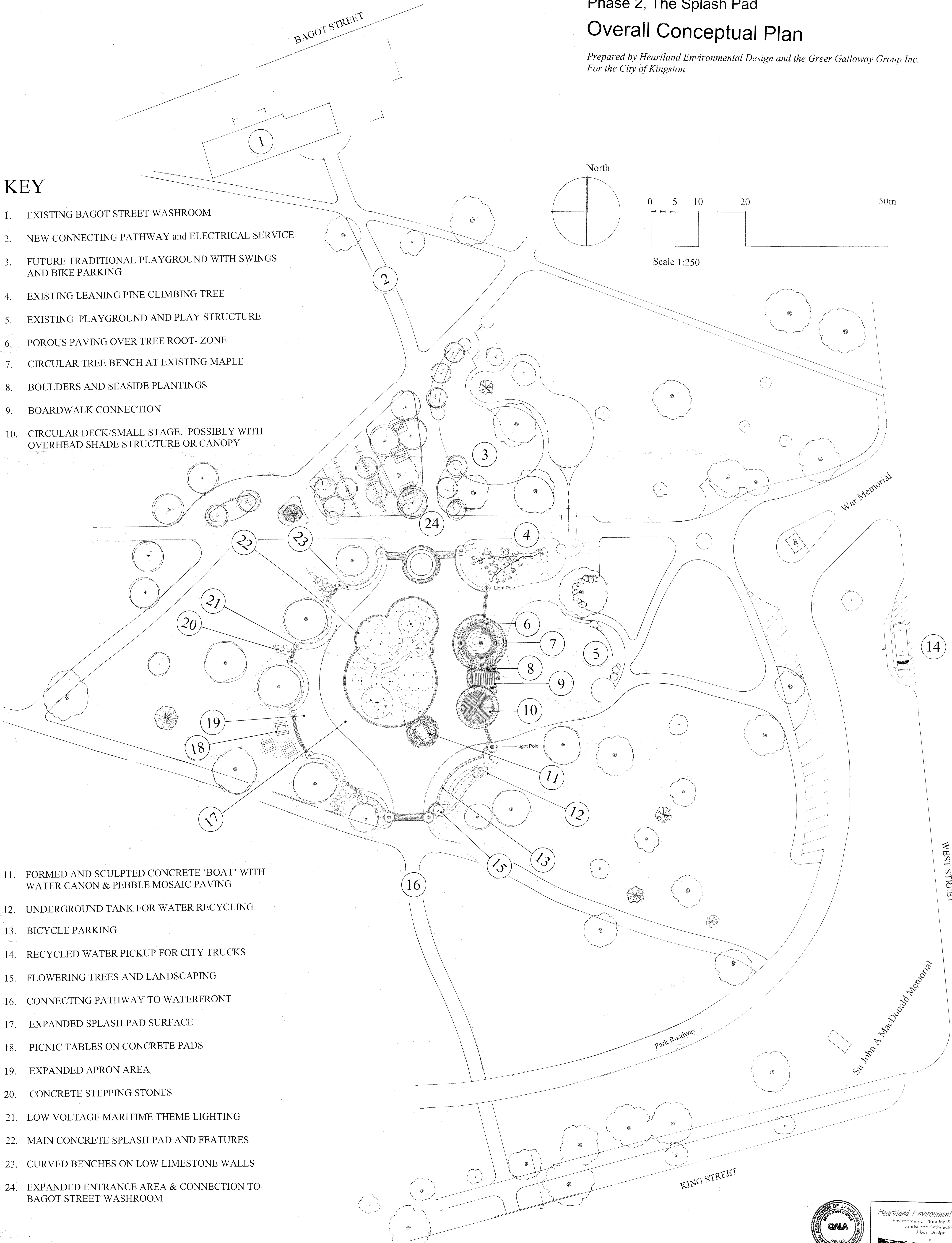
Overall Conceptual Plan

Prepared by Heartland Environmental Design and the Greer Galloway Group Inc.
 For the City of Kingston

KEY

1. EXISTING BAGOT STREET WASHROOM
2. NEW CONNECTING PATHWAY and ELECTRICAL SERVICE
3. FUTURE TRADITIONAL PLAYGROUND WITH SWINGS AND BIKE PARKING
4. EXISTING LEANING PINE CLIMBING TREE
5. EXISTING PLAYGROUND AND PLAY STRUCTURE
6. POROUS PAVING OVER TREE ROOT- ZONE
7. CIRCULAR TREE BENCH AT EXISTING MAPLE
8. BOULDERS AND SEASIDE PLANTINGS
9. BOARDWALK CONNECTION
10. CIRCULAR DECK/SMALL STAGE. POSSIBLY WITH OVERHEAD SHADE STRUCTURE OR CANOPY

11. FORMED AND SCULPTED CONCRETE 'BOAT' WITH WATER CANON & PEBBLE MOSAIC PAVING
12. UNDERGROUND TANK FOR WATER RECYCLING
13. BICYCLE PARKING
14. RECYCLED WATER PICKUP FOR CITY TRUCKS
15. FLOWERING TREES AND LANDSCAPING
16. CONNECTING PATHWAY TO WATERFRONT
17. EXPANDED SPLASH PAD SURFACE
18. PICNIC TABLES ON CONCRETE PADS
19. EXPANDED APRON AREA
20. CONCRETE STEPPING STONES
21. LOW VOLTAGE MARITIME THEME LIGHTING
22. MAIN CONCRETE SPLASH PAD AND FEATURES
23. CURVED BENCHES ON LOW LIMESTONE WALLS
24. EXPANDED ENTRANCE AREA & CONNECTION TO BAGOT STREET WASHROOM



The City of Kingston CITY PARK PLAYGROUND

The Splash Pad

CROSS SECTIONS

SEE PLANS L1 and L2
FOR LOCATION

NOTES for SECTION A-a

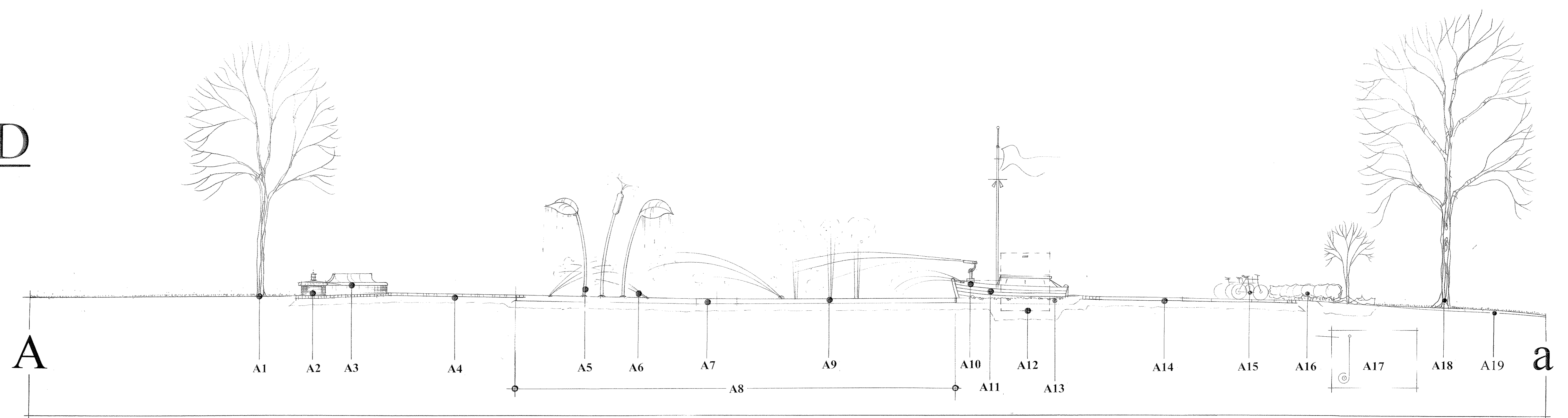
- | | |
|-----------------------------------|---------------------------------------|
| A1 Existing Tree | A11 Concrete Boat Replica |
| A2 Masonry Pier with Light Pole | A12 Control and Supply Vault |
| A3 Semi-Circular Bench and Pier | A13 Pebble Mosaic in Wave Pattern |
| A4 Apron Area, Phase | A14 Apron and Entrance Area, Phase I |
| A5 Leaf and Cattail Water Feature | A15 Bicycle and Stroller Parking |
| A6 Rooster Tail Spray | A16 Flowering Hedge Screen |
| A7 Central Drainage Channel | A17 Water Recycling Tank and Pump |
| A8 Concrete Spray Pad, Phase I | A18 Existing Tree |
| A9 Directional Sprays as Archway | A19 Park Lawns towards the Waterfront |
| A10 Water Cannon | |

NOTES for SECTION B-b

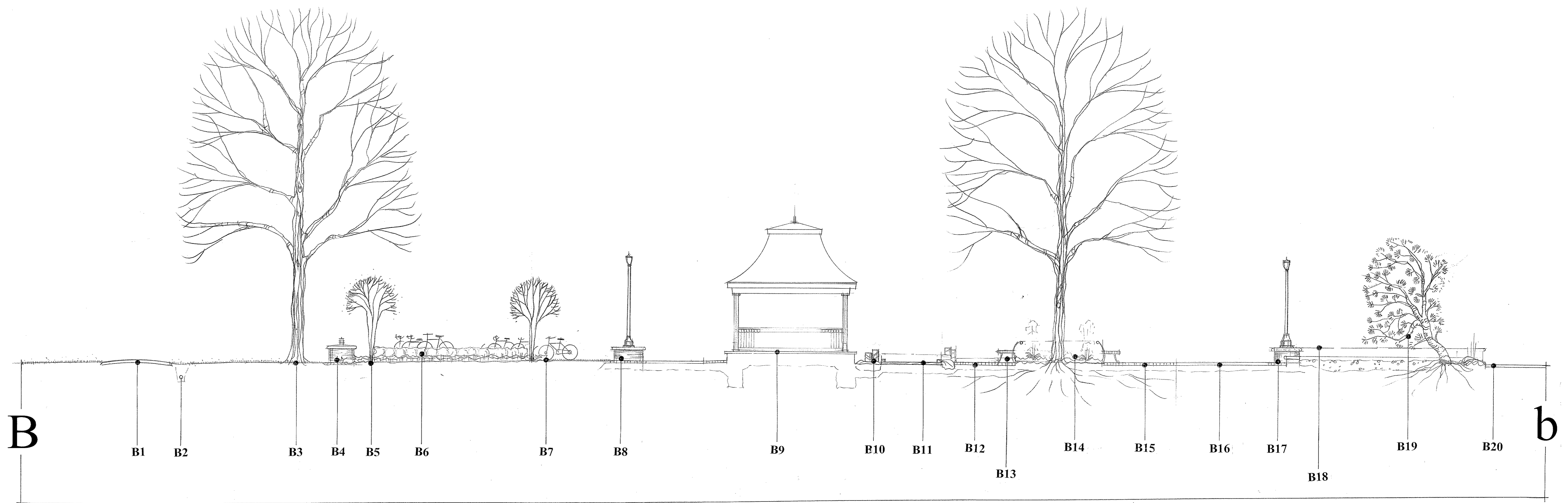
- | | |
|----------------------------------|-------------------------------------|
| B1 Existing Park Walkway | B11 Board Walk Connection |
| B2 Drainage Improvements | B12 Porous Paving over Tree Roots |
| B3 Existing Tree | B13 Circular Tree Bench |
| B4 Masonry Pier | B14 Shade Garden at Existing Tree |
| B5 Small Flowering Tree | B15 Porous Paving over Tree Roots |
| B6 Flowering Hedge Screen | B16 Phase I Apron and Entrance Area |
| B7 Bicycle and Stroller Parking | B17 Masonry Pier with Light Pole |
| B8 Masonry Pier with Light Pole | B18 Semi-Circular Bench beyond |
| B9 Wooden Deck with Gazebo/Stage | B19 The Leaning Pine Tree |
| B10 Wooden Wharf Piers | B20 Existing Park Walkway, Widened |

NOTES for SECTION C-c

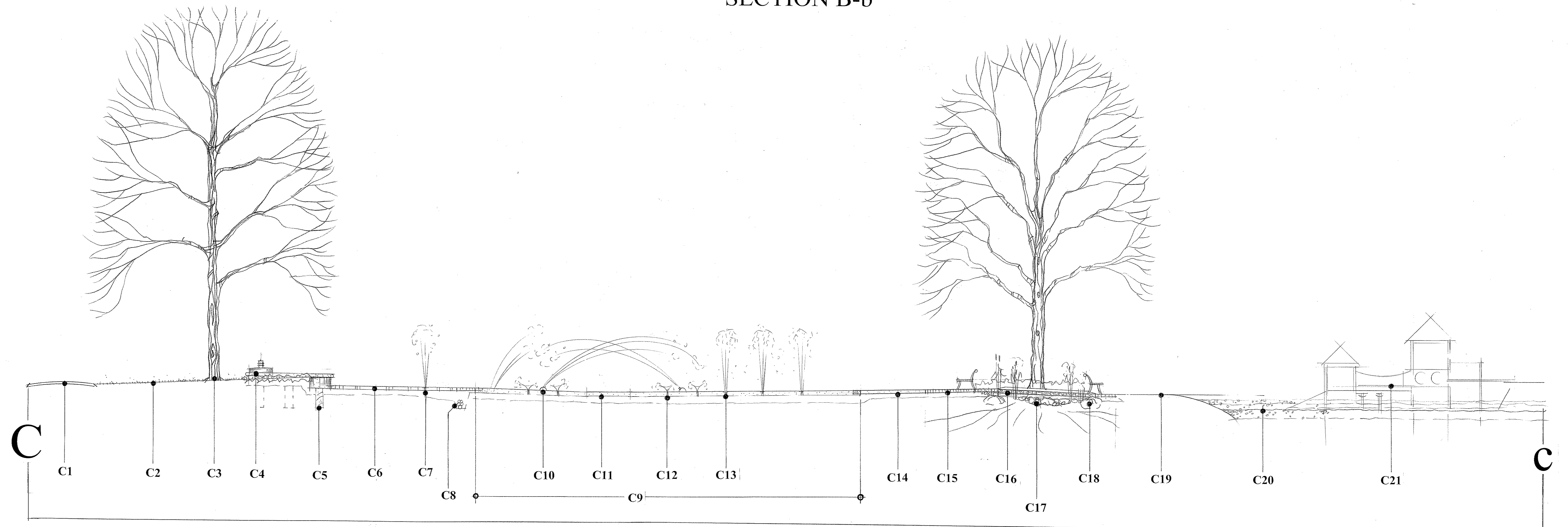
- | | |
|--|--|
| C1 Existing Park Walkway | C12 Water Jellies Water Feature |
| C2 Existing Park Lawn | C13 Directional Sprays as Archway |
| C3 Existing Tree | C14 Apron Area, Phase I |
| C4 Masonry Pier with Marine Light | C15 Porous Paving over Tree Roots |
| C5 Semi-Circular Bench and Pier | C16 Boardwalk Connection |
| C6 Phase 2 Apron/Pad | C17 Boulders and Cobble "Stream" |
| C7 Phase 2 Spray Features | C18 Seaside Grasses |
| C8 Combined Drainage and Supply Trench | C19 Existing Playground Paved Apron |
| C9 Concrete Splash Pad, Phase I | C20 Existing Safety Surface |
| C10 Launch Pad Water Feature | C21 Existing All-Accessible Play Structure |
| C11 Central Drainage Channel | |



SECTION A-a



SECTION B-b



SECTION C-c

